



*PVRM:*

# *Lift Weight Tolerance Control*

*January, 2016*

Powerful Tools for Better Performance



# Upgrade Overview

Each production item in your Virtual Bag system has a weight tolerance setting. The weight tolerance setting ensures that the lift operator fills each bag to an optimal weight. Bags that do not fall within the designated weight restrictions require an authorized person to enter the Weight Tolerance Override Password before the lift operator can lift the bag into storage (See your PVRM Quick Reference Guide, page 5, for more information about the Weight Tolerance Override Password). This upgrade puts another layer of protection on the weight tolerance values by protecting the weight tolerance settings on the Item Configuration screen with the new Administrator Password. The new password prevents unauthorized personnel from modifying the weight tolerance settings.

With this upgrade, you also have the new option of setting a default weight tolerance range using a specified weight or a percentage. Within this short guide, you will learn the process for setting the Administrator Password, designate the default weight tolerance, and how to override the default for individual items once you set the default.

## Activating and Managing the Password

To start using the new administrator password you must, activate the options, set the password, and define the tolerance settings.

### Activate the Password Management Option

To activate and set the password for the administrator access, you need to open the *Administrator Settings* dialog. From anywhere within the Virtual Rail application:

1. Click **Setup** on the main menu bar (see Figure 1).

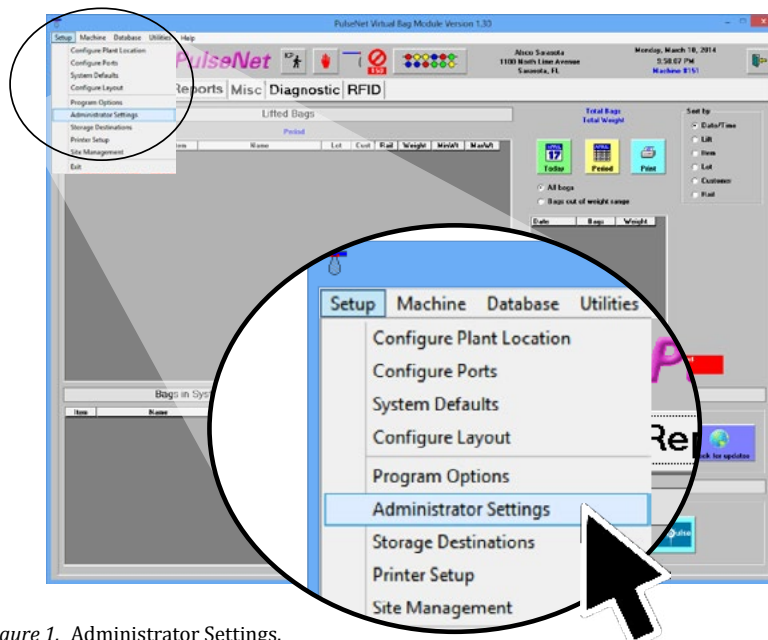


Figure 1. Administrator Settings.

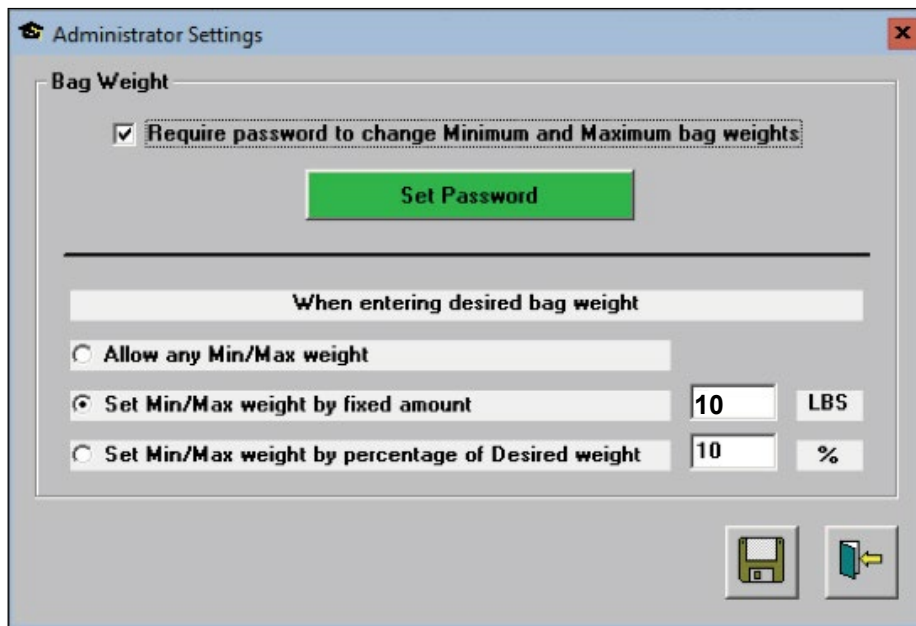


Figure 2. Administrator Settings.

2. Click Administrator Settings to open the Administrator Settings dialog (see Figure 2).
3. When prompted, enter the master password, "011754"
4. Insure that the **Require password to change Minimum and Maximum bag weights** box is checked.

## Set the Password

To set the weight tolerance management password

1. Open the Administrator Settings (see page 2).
2. Click the green "Password" button (see Figure 2).
3. Enter the password.
4. Save and close the password dialog.

## Set the bag weight options

You have three options for controlling the bag weight tolerances.

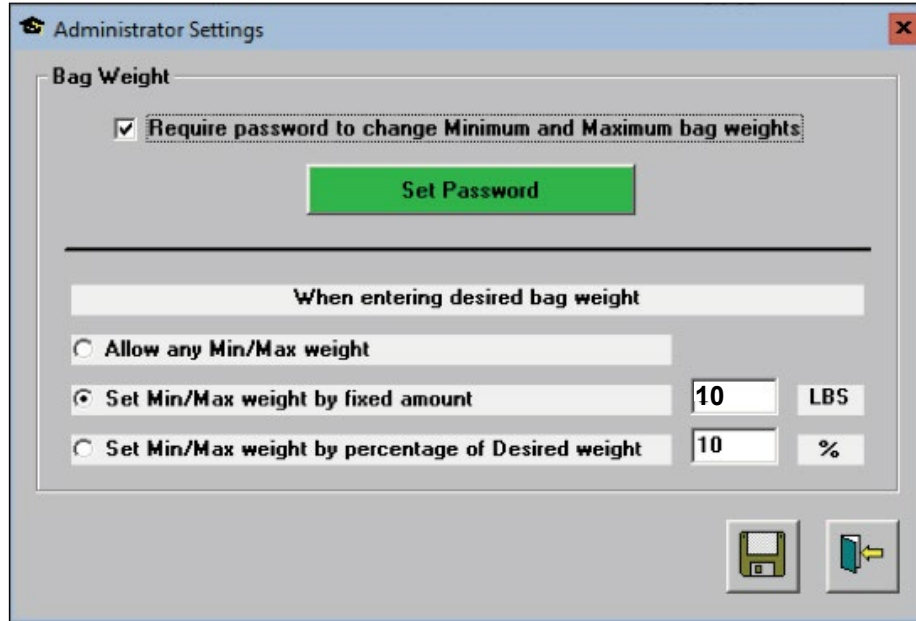


Figure 3. Administrator Settings.

## Allow any Min/Max Weight

Choose this option if you want the minimum and maximum weight controlled on a per-item basis. This is similar to the previous version of the software, except once set, the password is required to change the weight tolerances.

## Set Min/Max Weight by Fixed Amount

Selecting this option sets each item's max and minimum weight to the designated weight based on its current desired weight on the *Item Configuration* screen. Setting a value of 10-pounds will set a 20-pound tolerance; e.g. if the desired weight is 250-pounds, setting this value to 10-pounds will allow the lift-operator to lift the bag at weights as low as 24-pounds and as high as 260-pounds.

## Set Min/Max Weight by Percentage of Desired Weight

Selecting this option calculates the weight tolerance. For a desired weight of 250-pounds, if this option is set to 10% the option gives a 25-pound tolerance.

## Changing the Weight Tolerance for Individual Items

Once you have set the password and changed the tolerances based on pounds or percentage, you will most likely need to adjust the settings for some individual items. To change the weight tolerance for an individual item, click **Database> Configure Database** on the main Virtual Rail menu. This opens the *Configure Database* screen (see Figure 4). Using the top **Item Configuration** section

1. Click to select the item that you want to modify in the list.
2. Press the green **Edit** button to the right of the table to open the *Configure Items* dialog (see Figure5).

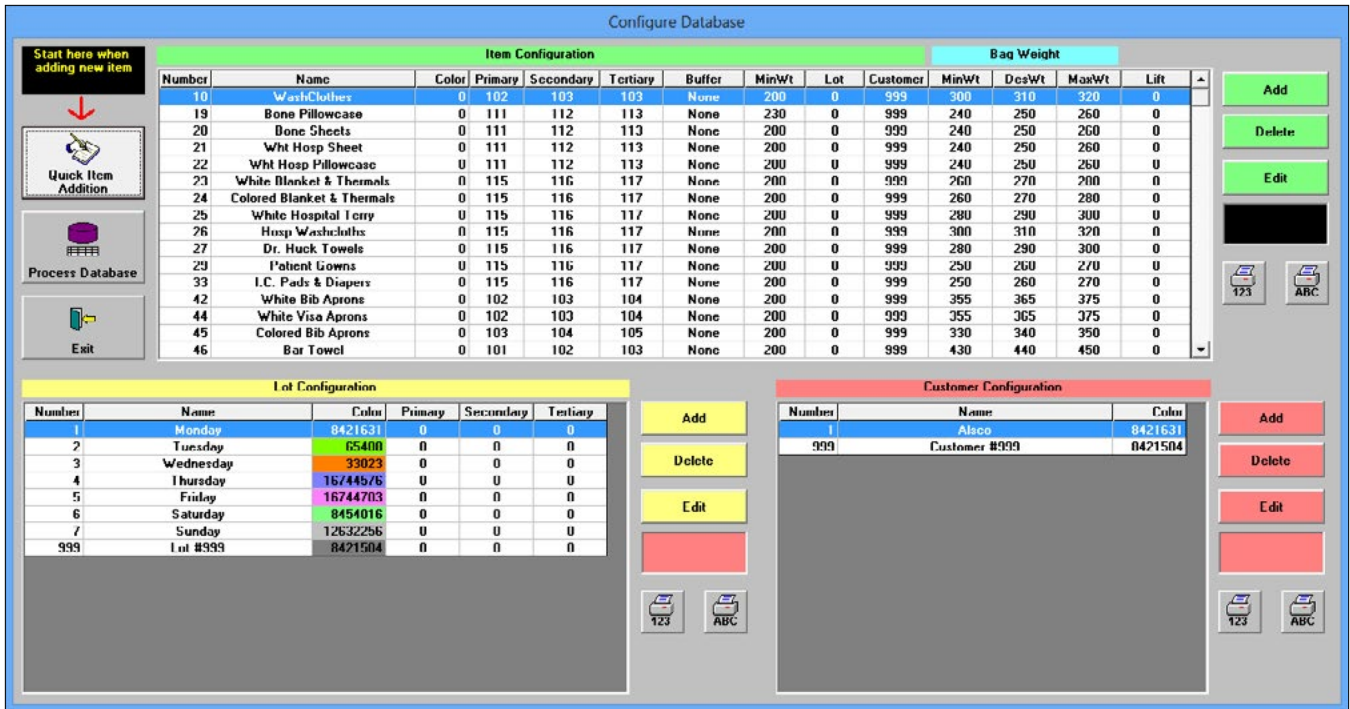


Figure 4. Configure Database.

3. Click the padlock button.
4. Enter the Weight Tolerance Password.
5. Change the **Maximum** and **Minimum** bag weight values.
6. Click **Save**.

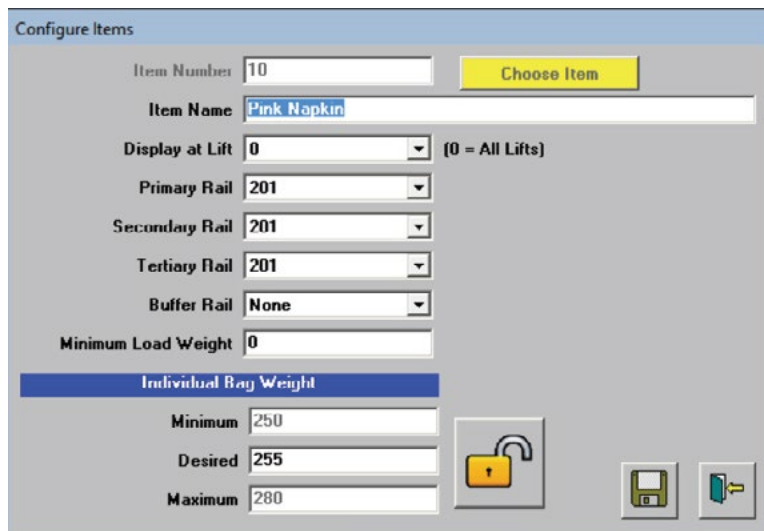


Figure 5. Configure Items dialog





1100 North Point Parkway  
Acworth, GA 30102  
(770) 974-2700  
1.888.SOFTROL  
[www.softrol.com](http://www.softrol.com)

